

# TOOL MANAGEMENT NEWS

Summer 2000

An Information Guide about ITC's Tool Management products for manufacturing, their concepts and application.

## ITC is 20 Years Old

ITC was formed in Feb 1980 as Industrial Technical Concepts, Inc. and introduced the world to TLC, short for Tool Location Control. The first system was actually run on a Prime 450. After a while we realized that something much smaller was needed. In the early 80's TLC was installed on Cromemco S100 bus machines (with 5 & 11 Mbyte hard drives) running Cromix (a version of UNIX) and a bit later on Tandy 6000's running Xenix. TLC has been Multi-user, Multi-tasking since its inception.

In 1983 ITC went public and changed its name to ITC Integrated Systems, Inc.

In the mid 80's ITC introduced ('84) a single user version for the new PC & MS-DOS Intel 8088 and later 8x86 chip based personal computers. ITC offered SCO Xenix O/S on 80286 PC's for low cost multi-user systems. In the '80s ITC compiled versions of TLC to run on virtually all UNIX based computers, Networks and a variety of other Operating Systems.

In 1986 ITC went international with TLC systems being licensed under the name of TOOLWARE in Europe by ISIS Informatics Limited, who now is a close development partner. Now ITC's Tool Management software is available all over the world in 8 different languages. ITC markets its products worldwide through independent distributors, consulting agencies, tooling catalog companies and cutting tool manufacturers.

In the late 80's a version was modified to operate with the MS-DOS based Window's 3.x product and later the 9x and NT versions of Microsoft's Windows.

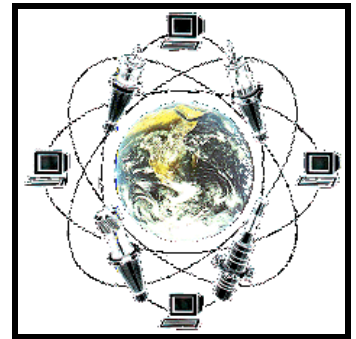
In the 90's we were busy making improvements to how TLC worked with the Crib Attendants. Making the software easier to handle for the on-screen inputs of tool transactions and intuitive error correcting of shop floor data input sessions. We were also conducting a slew of tool management courses and fighting off the numerous copycat tool management systems that were popping up. Fortunately the competition missed the point that tool management is done from the tool crib and that tool control is a multi-user application. That fact eliminated most in their first 2 years of competing with ITC.

In the mid 90's we concentrated on communicating tool orders to vendors and suppliers of tools from our customers' TLC computer. We made many alliances and expanded our own sales distributor base in the process.

In 2000, we are expanding the software for 32-bit operation and looking at the new interfacing situations that are appearing. ATD's, CAM systems, machine control units themselves as terminals to the tool management system. We've already interfaced to many ATD's, Preset Machines and have provided data transport utilities for information contained in the Tool Databases. The new 32-bit TLC product and the new ATMS product have already considered the need and provide a solution for many of these interface options.

Some firsts and Terms that have been introduced to the industry by ITC:

- ITC was the 1st to put the words Tool and Management together.
- To address tools as Perishable Assets.
- To build a logical numbering system for all Tool types called the Independent Tool Code Standard.
- To coin the phrase *It's 10:00 AM - Do you know where all your tools are?*
- To put a Tool Management newsletter together - June of 1984.
- ITC was the 1st company to establish education and instructional seminar programs for Tool Management, which were adopted for several years by the SME.
- ITC interfaced with AS/RS's in 1981, predecessors to Automatic Tool Dispensers.
- Interfaced with Presetters in 1987 with a joint development project with ISIS Informatics Limited.



ITC's trade-in policy allows you to purchase as much tool control you need TODAY and trade up for more TOMORROW.

inside...

- [ITC IS 20 YEARS OLD](#)
- [NEW TLC 32 IS MULTI-USER ONLY](#)
- [ATMS IN SQL, ORACLE & ACCESS VERSIONS](#)
- [TLC USE INFO & TIPS](#)

- [CD DEMO'S FOR ATMS AVAILABLE](#)
- [ALL TLC SYSTEMS ARE LOWER IN PRICE](#)
- [TLC'S THE LAST COMMENTS](#)
- [TLC IS AVAILABLE UNDER LINUX](#)
- [TLC REPORT VIEWER](#)

# New TLC Systems & Features

**TLC 32** will soon feature pull-down menu access from the Supervisor, Crib Attendant and Reports opening screens. This feature will allow easier access for those familiar with pull-down menus. Of course, the function key access and menu short cut commands will still be active for those who have had previous versions of TLC. More about this in the next Newsletter.

The 32-Bit version of TLC has been recompiled for operation with Windows NT based networks and workstations. Any inconvenience you have experienced learning how to invoke `|WINNT|SYSTEM32|CONFIG.NT` with the `device=%SystemRoot%\system32\ansi.sys` command will disappear with TLC 32. You can also forget how to set the command line: `SHELL=%SystemRoot%\System32\command.com/e:1024`, unless you have some CAD/CAM software that will need some extra environment space.

**TLC 32** has a new pricing structure for 2000. It starts with a 2-user version at prices that were once reserved for the single user introductory product. But, since we know that true tool tracking, planning, kit development and tool ordering requires more than one person ITC, has decided that TLC 32 will only be offered as a multi-user product. It is available in 2, 5, 10, 16 and Site License configurations. Check ITC's WebSite out for the new pricing structure.

**TLC 32** is now available for LINUX operating systems.

**TLC Legacy Systems** are the original 16-Bit TLC systems. They also have new prices. If you have the knowledge to invoke the CONFIG.NT, DEVICE & SHELL commands mentioned earlier, you can run the TLC Legacy Systems under Windows NT or 98 at a substantial savings. The TLC Legacy systems are full featured and are the most affordable systems available. We doubt you can find a comparable tool management software product at their pricing.

**TLC 2.7.2 has a new Environment setup.** TLC revision 2.7.2 has a feature that eliminates the need to call environment settings in the AUTOEXEC.BAT, SUPTLC.BAT, CRIBTLC.BAT, etc. You can create a file called **TLC.CFG** in the TLC\BIN directory that will invoke the environment settings you want. This feature was mentioned in the last newsletter, but not many asked about it. So we thought a little more explanation might prompt you to use it.

**Environment** variables are explained on page 33 of your TLC User's Guide. They are in the section called System Control Variables. If you don't have a copy of the TLC User's Guide, send a request via Email and I'll send you one back via Email.

Instead of an elaborate explanation about **TLC.CFG** compare the following examples:

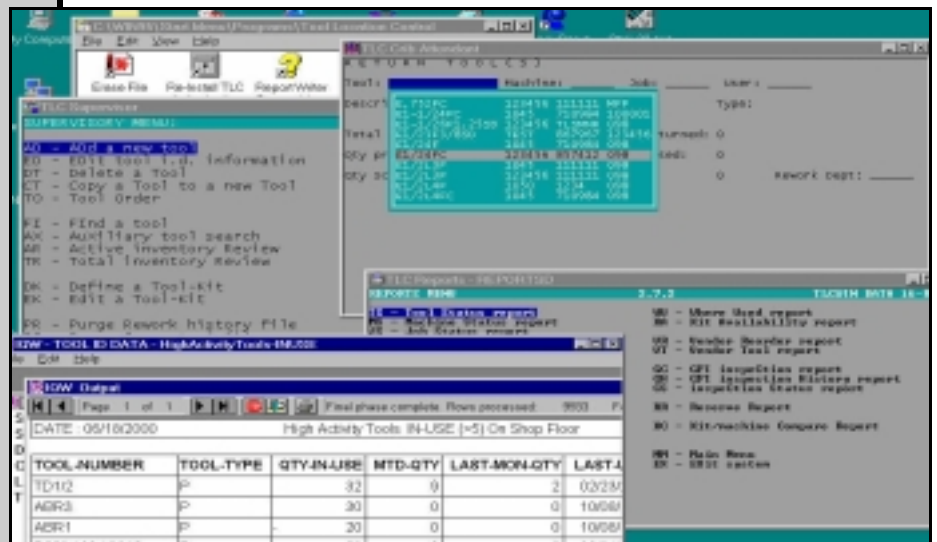
```
My TLC.CFG Equivalent
TLCDATA=c:\tlc\data
UPPERCASE=ON
JOB=ON
PTYPE=DUMB
LISTDEV=c:\win95\temp\prnfile.txt
EXCOM=c:\tlc\bin\rptvwr.exe
```

### One of my Batch files

```
@echo off
break off
rem SET UP ENVIRONMENT VARIABLES.
SET TLCDATA=C:\TLC\DATA
SET PTYPE=HPLJ
SET JOB=ON
SET UPPER=ON
SET PTYPE=DUMB
SET LISTDEV=FILE.TXT
SET EXCOM=RPTVWR.EXE FILE.TXT
:begin
echo Please wait -Loading TLC Supervisor's Menu
bin\superd
IF NOT ERRORLEVEL 2 GOTO done
cls
echo Please wait ... Loading the Report Menu
bin\reportsd
IF NOT ERRORLEVEL 1 GOTO done
GOTO begin
:done
cls
```

Okay, it's not quite the same.

The Batch file calls both the Supervisor & the Reports menu. I don't do that anymore because I just click on the Menu Icons and leave them on the screen because a Multi-User System is so affordable I can upgrade a TLC Legacy System to a 10-User system for less than what a Single User system used to cost.



## TLC Report Viewer and EXCOM

You may have noticed that my Batch file and my **TLC.CFG** contained statements calling out EXCOM, LISTDEV and a command called **rptvwr.exe**. How these environment variables and commands work depend on whether you are running the TLC Legacy or TLC 32 software. Since the current majority are running the TLC Legacy software, I will explain how these features affect TLC using the Legacy software.

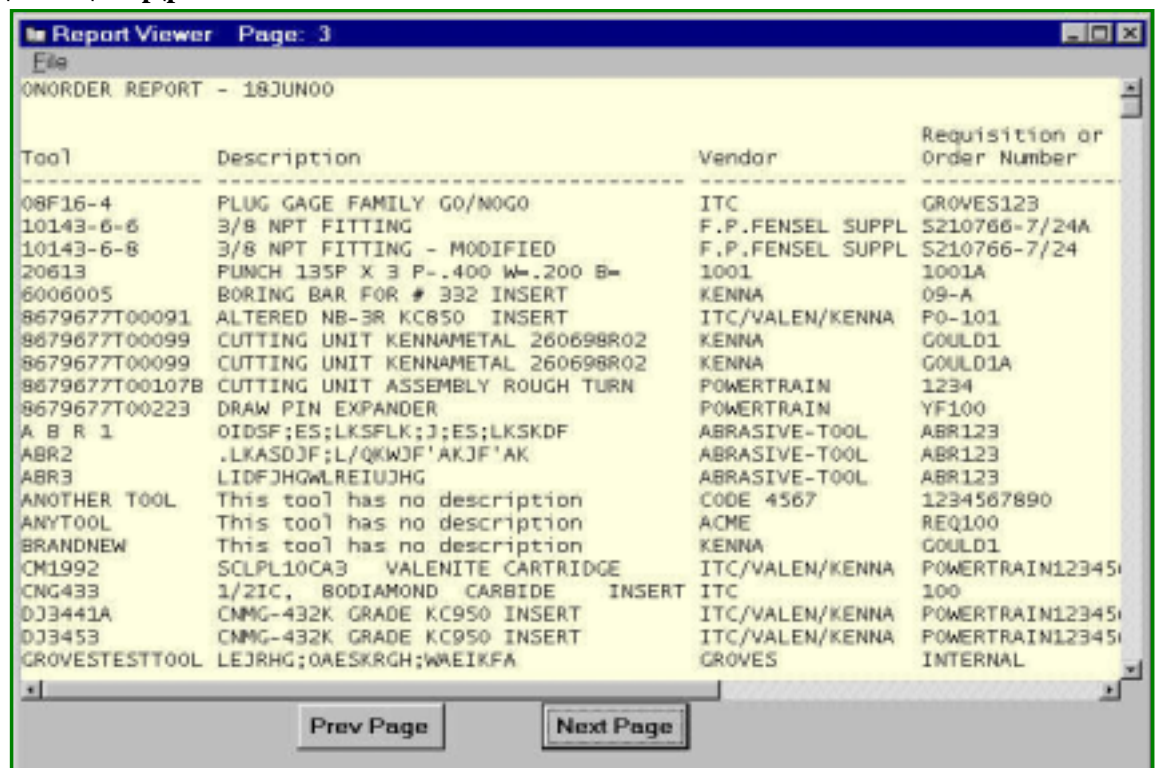
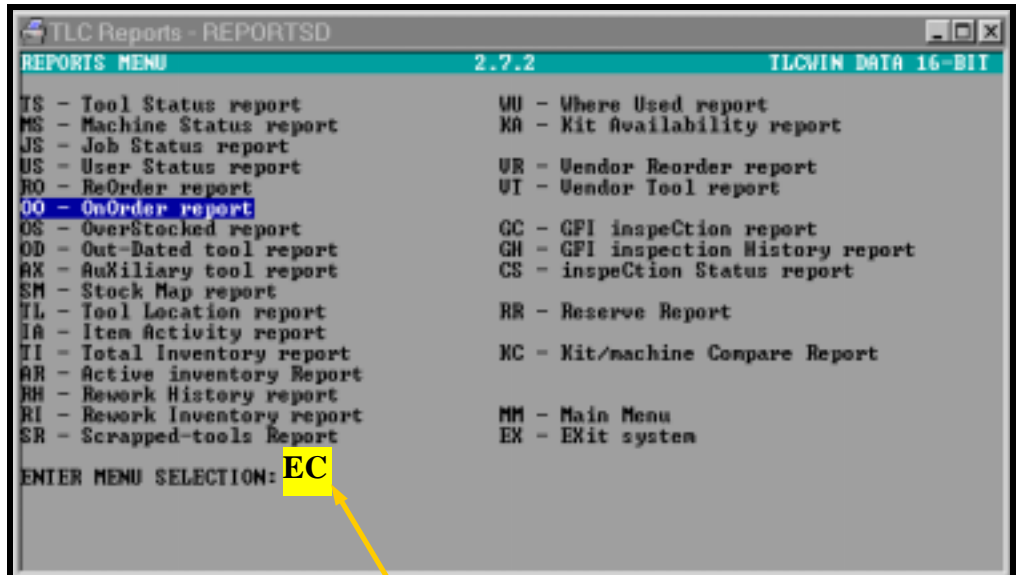
First, I have set these variables so I can view reports on the screen in their entirety, page up and down, scroll right and left and resize and print if necessary. Those of you, especially TLM Kennametal users, who have the TLC or TLM Windows GUI screen version are already familiar with the Report Viewer and report printing. This exercise is for the Character Screen Users who want to view their report on the screen first and use the Windows print manager.

**EXCOM** means External Command. By setting it equal to the path of Report Viewer's executable (**EXCOM=c:\tlc\bin\rptvwr.exe**) it will execute when I type **EC** at Enter Command on the TLC Menu. Report Viewer will look in the **c:\win95\temp** directory for a file named **prnfile.txt** for the report to view or print. Why? Because I set the LIST DEVICE (**LISTDEV=c:\win95\temp\prnfile.txt**) to be that file name in that directory. I set the PTYPE to DUMB so there will be no special printer codes in the file and I can use the Windows Print Manager to select any printer available to it for printing these reports.

As I run my reports they will append to the last report run, thus my PRNFILE.TXT will continue to grow. The nice part is I can run several reports, review them and then print them when I want. The down side is the file continues to grow and can become quite large. To control the size of the file and how many reports I want to append I built a batch file to clean the file out from time to time. I delete it periodically to manage its size. The batch file need only contain this statement; **erase c:\win95\temp\prnfile.txt**.

**Selecting File** will pull down a menu allowing you to change fonts, Print the file or pages of it, set-up the printer and exit Report Viewer.

**TLC 32** Users have it a bit easier using Report Viewer. 1) you have a option of creating a new file for each report or appending to the file, 2) you don't have to use EXCOM if you set LISTDEV to a file, it will automatically execute ReportViewer to your display when you run the report.



# ATMS -SQL, Oracle or Access

ITC & its development partner ISIS Informatics Limited is happy to announce that our new Tool Management Software offering, ATMS or Advanced Tool Management System, is now available in Microsoft Access, MS SQL Server or Oracle database configurations.

ATMS, like TLC 32, is only offered as a multi-user product. It is available in 2, 5, 8 and Site Licenses for ATMS Access and 2, 5, 10, 16 and Site Licenses for ATMS MS SQL Server and Oracle versions. ATMS will be offered in a **Lite** version (sans Kitting and Gage control) in the Access and SQL version. The Oracle version is only offered as a full featured product. **Check** the WebSite out for the latest pricing and brochures for ATMS.

If you are wondering about the system requirements for ATMS they are as follows:

A Pentium PC with 64Mb of Ram, SVGA monitor and Windows 95, 98 or NT.

Database engine requirements: Microsoft Access, SQL 6.3 or above or Oracle 7.3 or above.

**CD demos** are available for ATMS. You need to call or email us for a copy. Before you request the demo I suggest you go to the ITC Web Site and download the ATMS Brochure and study its features. This is a large program and loading the demo won't do you much good without understanding the features and how to use them. A manual is provided on the CD. For more information, I have a copy of the general ATMS brochure I can Email to you.

## TLC T.I.P.S.

**TLC Legacy to TLC 32 Database Conversion.** Use the standard FILEDUMP utility with your existing TLC system. Be sure you are starting with a new or blank TLC 32 formatted database. (If not you will need to initialize a new one with the INIT utility.) Use the TLC 32 FILELOAD utility to load the old TLC dump files. That's it.

**TLC Legacy to ATMS Database Conversion.** There is a conversion utility to convert the TLC database to the ATMS Access format. Call ITC for a quotation for assistance in your conversion.

**Standard Database File Conversions.** Any file in your TLC data base can dumped to an ASCII file, e.g., CSV, tab or other delimitation. Then that file can be imported to almost all known database engines. Examples of file dumps and file loads (dump data back into TLC) are included in your TLC User's Guide - UTILITY Section, pages UT-4, 6, 11, 12. ITC can assist you in converting tool information from a spreadsheet or competitors data file. If you would like to discuss the details for converting a tool information spreadsheet or some other data format, please give ITC a call. Those of you who are using TLC ReportWriter can export any information you can report as a database file, making this process very simple.

**Barcodes & TLC or ATMS.** I keep getting this question & I answer it in almost every newsletter. If you have a barcode reader and it is interfaced with a wedge between your keyboard and computer you can do what the operator in the picture is doing. No special software is needed. Just go buy your barcode unit, connect and try it. That's why my answer is usually "If you have them use them". If you have a barcode reader on your computer, TLC is ready for barcode input. Actually your computer reads the barcode and sends the keyboard equivalent to the TLC software. TLC didn't even know it was a barcode, your computer and barcode wedge reader converted the bar-code input. What if you are using a Remote Barcode Reader? You also need to find out how to program your remote barcode reader (programming will differ among brands). ITC can provide a suite of utilities that will read the remote unit's data download and update the TLC database. See the ISSUE, RETURN and other utilities in your TLC User's Guide Utility Section. Call ITC if you need these utilities. If you wish to have a remote barcode solution designed for you, several ITC solution partners and distributors can assist you. In the case of barcodes we suggest CremSol Technologies, L.L.C. If you are a TLM user, there is a remote barcode solution from Kennametal that is compatible with TLC.



Tool Management begins in the Tool Crib. If you don't know the tools left the tool crib or where they went, you can't account for them, you don't know when to REORDER them, you can't report, plan their use or charge them to anything.

# TLC Manager Reports

**Tool Manager Reports** augment TLC's standard reports. TLC's standard reports focus on reporting the current status of tool activity. **Tool Manager Reports** focus on the TRANSACTION FILE for their information. The Transaction File allows views of what has happen as well as viewing current information.

**The thirty-three reports** featured in **Tool Manager Reports** are useful for providing answers to many day-to-day management questions and status. ITC's TLC ReportWriter (an option product) is the conduit that runs these report procedures. If you need additional information on these reports or desire to modify the procedure for your specific interest, you can copy or edit any of these reports as needed for your specific requirements.

DATE : 06/20/2000		Perish/NonRetn Tooling Issued to Users		PAGE : 1	
TRANS-USER	TRANS-DATE	TOTQTY	TRANS-TOOL-NUMBER	TOOL-DESCR	
	01/26/2000	2	#2LUBE	STRHEY	
		2			
098	02/24/2000	1	#2LUBE	STRHEY	
		1			
JJF	03/11/2000	2	ITTSAMPLE	DEMO TOOL HBGALSDJHQLJKB,KJVNB	
JJF	03/11/2000	1	SHOPAPRON	BLUE DENIM 36" SHOP APRON	
JJF	03/11/2000	1	GLOVES	SHOP GLOVES	
JJF	03/11/2000	1	#2LUBE	STRHEY	
		5			
MFP	03/11/2000	2	#2LUBE	STRHEY	
MFP	03/11/2000	3	CRCHDG	METAL DEGREASER SPRAY	
MFP	03/11/2000	2	GLOVES	SHOP GLOVES	
MFP	03/11/2000	4	ITTSAMPLE	DEMO TOOL HBGALSDJHQLJKB,KJVNB	
		11			
		19			

This sample report depicts perishable non-returnable tools that have been issued to users between two dates. An information guide to the Tool Manger Reports is available for you to examine. **Call or Email me if you would like a copy.**

## TLC's The Last Comments

**ITC's participating with all ATD Vendors.** – In the past we have offered our utilities to ATD manufacturers, i.e.. Vertex, AutoCrib, to use for the download their transactions to a TLC system host. This action completes the merge of ATD tool transactions with the tool crib's transactions in order to provide complete shop floor tracking of both ATD and Tool Crib. We are happy to announce that we are also working with two new ATD suppliers, Supply Point Systems Inc. & Kennametal's Tool Boss. ATD operation interfaces are available with ATMS, TLC 32 and TLC Legacy Systems.

**WEBSITE changes.** - Some minor changes have been made to the WebSite's general verbiage. A new TLC Brochure and TLC Product Pricing guide are available. You should visit to get the updated versions.

**Price List Changes** - the new price list reflects substantially lower prices for TLC Legacy and TLC 32 Systems. *You should be trading in for more users.* The ATMS MS SQL Server and Oracle system prices have been updated. There is new pricing for ITC TLC Economy Level Starter Systems. New Product pricing also includes TLC Manager Reports. Maintenance pricing has been included for all systems.

**TLC ReportWriter Starter Procedures** - there is a set of 12 reports to assist you with your TLC Report-Writer. These reports serve as useful reports for information and as templates to show you ways to generate columnar reports, graphs and formatted printouts. **Call for your set today.**

**TLM Kennametal customers** - Kennametal has opted to handle ATMS exclusively. Any TLM customer may opt to trade up to more users or to the TLC 32 system and retain trade in credit based on the comparable TLC or ATMS system. Or you may wish to simply upgrade your current system to version 2.7.2. Maintenance is also available for Kennametal systems. **Contact ITC for your trade in value or 2.7.2 upgrade price.**

**New Book about Tool Management - Tool Management Strategies**, the 1st definitive book concerning Computerized Tool Crib Control is available from Hanser Gardner for \$49.95. If you place the order direct to ITC, Martin Plute, the author, will be happy to personally sign/dedicate the book.

**ITC accepts MasterCard, Visa and American Express Cards.**

## Consulting Partners

### **Application Data Systems, Inc.**

Trudy Engelhardt 513-984-6500 FAX 513-924-2941 Cincinnati, OH – Barcode integration.

### **Bottom Line Consulting, Inc.**

Carolyn Hunt 540-375-0933 FAX 540-375-6717 - Salem VA. **A Prophet 21 Certified Consultant** - Full Service Industry Specialist, Business Solution Consultation.

### **Brice Brown Systems**

Brice Brown 414-764-9511 FAX 414-764-3077 Hales Corners, WI - Systems integration, Installation for tool management system users.

### **CremSol Technologies, L.L.C.**

Ted Cannon 856-384-2700 FAX 856-384-0074 Thorofare, NJ - **Remote Barcode** hardware & Utilities for TLC systems. WebSite <http://www.cremsol.com>

### **Faspac Systems Inc.**

888-794-7880 LaJolla, CA -Suppliers of Distribution Business Management Systems. Provide interface with EDI file transfer of TLC orders between systems.

### **Manufacturers Technologies**

Tom Charkiewicz 413-733-1972 FAX 413-739-9250 West Springfield, MA Manufacturers of the popular Cost Estimating software product - **Costimator**.

### **Prophet 21**

800-776-7438 Yardley, PA -Suppliers of Distribution Business Management Systems. Third Party Marketing agent for TLC Tool management Systems with EDI file transfer interface between systems.

### **RauSoft, Inc.**

Bill McKnight 256-430-0990 FAX 256-430-0024 Huntsville, AL Providers of Perfect Turn and Perfect Mill Cutting tool reference database.

### **SB Consulting**

Steve Beck 419-394-3131 FAX 419-394-6290 St. Marys, OH - Operation philosophy, startup consulting and training for tool management system users.

### **Vertex Technologies**

Harvey Rohmiller 800-249-4933 FAX 513-671-5317 Cincinnati, OH Leading supplier of Automatic Tool Dispensing Units.

### **SH Technology Consulting**

Steve Horton 609-953-1332 Medford, NJ. Provides management consulting to plan, build & maintain computer networks. Free initial consultation.

### **Supply Point Systems**

Rob Cox (919) 466-0037  
<http://www.supplypointsystems.com>  
Morrisville, NC - Supplies ATD solutions with TLC or ATMS.

## Special Service Dealers

**Medix Systems Consultants Inc.** Edwin Ukpaby 708-331-1271 FAX 708-331-1272 S. Holland, IL - Installation, training, hardware systems and software integration for ITC TLC tool management system users.

### **West Software Company**

Brian West (510) 797-6680 Fremont, CA - An ITC consulting distributor featuring training, installation and barcode strategy installation.

## Demonstration Centers

**Applied Management Technology**, Cleveland, OH (440) 238-8700 - Mike Whalen

**Automated Manufacturing Solutions**, Londonderry, NH (603) 425-0703 - Bob Smith

**Badger Mill Supply Corporation**, Oshkosh, WI (920) 235-0011 - Kathy Reed

**Chandler & Farquhar**, Randolph, MA (781) 961-2775 - Kathy Hersey

**Groves Industrial Supply**, Houston, TX (713) 675-4747 - John Spencer

**Herlache**, Green Bay, WI (920) 337-2345 - Ellie Engelbrecht

**Hodapp & Associates**, LaGrange Park, IL (708) 352-1571 - Joe Hodapp

**Medix Systems Consultants**, S.Holland, IL (708) 331-1271 - Edwin Ukpaby

**Oliver H. Van Horn Co., Inc.**, New Orleans, LA (504) 821-4100 - Lee Egan, Jr.

**Strong Machinery, Inc.**, Murfreesboro, TN 615-848-5225 - Fred Strong

**The Hettenhouse Group**, Hartland, MI (810) 229-1673 - Bill Chapman

**Tool Service Corporation**, Milwaukee, WI (414) 476-7600 - Lisa Bayer

**Wisconsin Industrial Network, LLC**, Milwaukee, WI (414) 256-7096 - Lisa Mauer

**WSC - West Software Company**, Fremont, CA (510) 797-6680 - Brian West

## International

ISIS Informatics Limited, United Kingdom & Europe (44) 1483-424340 - Geoffrey Herrington

Sutton Technologies, Inc., Japan - Asia (03) 5553677 - Al Hill

GEM Automated Systems Limited, Canada (416) 451-2266 - Dave Metcalf

## Marketing Affiliates

Application Data Systems, Inc. -- Vertex --  
Innovative Distributor Group -- Rausoft --

Kennametal Inc. -- Prophet 21 --  
Lista International -- AUTOCRIB --

Manufacturers Technologies --  
Supply Point Systems, Inc.

## Sale Distributors

**Abrasive Tool Corporation**, Rochester, NY (716) 254-4500 - Matt Hanna

**Advanced Tool Sales, Inc.** South Bound Brook, NJ (732) 469-6776 - John A. Carroll

**American Precision Tool & Engineering**, Norcross, GA (770) 447-4455 - Carl Roberts

**Buckeye Industrial Supply Co.**, Columbusand Cincinnati, OH (800) 686-8400 - Derrick Cundiff

**Ben Spurger Co.**, Dallas, TX (214) 388-0651 - Cary Spurger

**Coast Tool Company**, Fresno, CA, Mt. View, San Leandro, CA (510) 569-1945 - Brian Enbom

**Dayton Supply & Tool**, Dayton, OH (937) 461-4550 - Jerry Kronenburger

**Dixie Tool Co.**, Brownsville, TX (956) 544-4333 - David Garcia

**F.P. Fensel Supply, Co.**, Wilmington, NC (910) 763-9934 - F. Peter Fensel, Jr.

**H&C Tool Company**, Rochester, NY (716) 235-5700 - Kevin Barry

**Leonard Industrial**, Westbury, NY (516) 334-7565 - Mark Kauffman

**Mackintosh Tool Company**, Centerville, OH (937) 885-8840 - Brian Bertke

**Max Tool Inc.**, Shannon, AL (205) 942-2466 - David Orr

**Nolan Supply Corporation**, Syracuse, NY (315) 463-6241 - Chuck Snieder

**Precision Supply Company**, Brunswick, OH (330) 225-5530 - Bob Koch

**Phelps Industrial Tooling Co., Inc.**, New Berlin, WI (414) 785-5555 - Dawn Adams

**Quality Tools & Abrasives**, Bensenville, IL (630) 350-2110 - Tom O'Connell

**Salem Tools**, Salem, VA, also Bristol, VA, Charlottesville, VA, Richmond, VA, Kernersville, NC, Arden, NC, Fort Mill, SC, Easley, SC (540) 389-0726 - Al Wooldridge

**Scott-Baker Co.**, Cleveland, OH (216) 461-2880 - George Baker

**Shamrock, Inc.**, Scotia, NY (518) 399-2014 - Paul O'Brien

**Sheats Supply**, Indianapolis, IN (317) 542-1070 - Jeff Sheats

**Shop Tools, Inc.**, Palo Alto, CA 650-494-8331 - Russ More

**The Tool Crib** of Illinois, Bensenville, IL (630) 595-8665 - Chris Walquist

**The Tool Crib**, Knoxville, TN (423) 525-6195 - Frank Slagle

**Updike Supply Co.**, Dayton, OH (937) 264-8300 - Steve Short

**Veon Tool**, Tallevast, FL 941-351-8366 - Mike O'Neill

**Warren Engineering**, Milwaukee, WI (414) 482-2860 - George Kleiner

© 2000 ITC Integrated Systems, Inc. All Rights Reserved

## Action Survey Summer 2000 Issue

Name: \_\_\_\_\_

Company: \_\_\_\_\_

Address: \_\_\_\_\_

\_\_\_\_\_

Phone: \_\_\_\_\_

FAX: \_\_\_\_\_

Email: \_\_\_\_\_

List Current (with Serial Number) Tool Management Product that you use:

\_\_\_\_\_

Revision Level: \_\_\_\_\_

Do you use TLC ReportWriter? \_\_\_\_\_

Please fill in the following subjects with your preference. Check all that apply. Please Mail or FAX this form to one of the ITC addresses given below.

### Upgrade Quotes

- Current TLC to Rev. 2.7.2.
- to a Higher TLC Product
- TLC 32
- TLC ReportWriter
- TLC to ATMS

### Send me new Demo's of:

- TLC Professional
- TLC IQ ReportWriter
- Toolware Deluxe
- ATMS

### Tool Management Strategies

- Purchase Book -\$49.95 plus shipping.

### Other Topics

- Send more information about:

\_\_\_\_\_

\_\_\_\_\_

Page 7

Be sure to fill in the above company information. Then mail or FAX this page to:

### ITC Integrated Systems, Inc.

2008 Raccoon Run                      or                      P.O.Box 8203  
Clayton, NC 27520                      Cherry Hill, NJ 08002  
FAX (919) 553-1370                      FAX (856) 779-1963  
Call (919) 553-1258                      Call (856) 779-1933

or

E-mail [75020.447@compuserve.com](mailto:75020.447@compuserve.com)

WebSite: <http://www.itctoolman.com>



# TOOL MANAGEMENT NEWS